

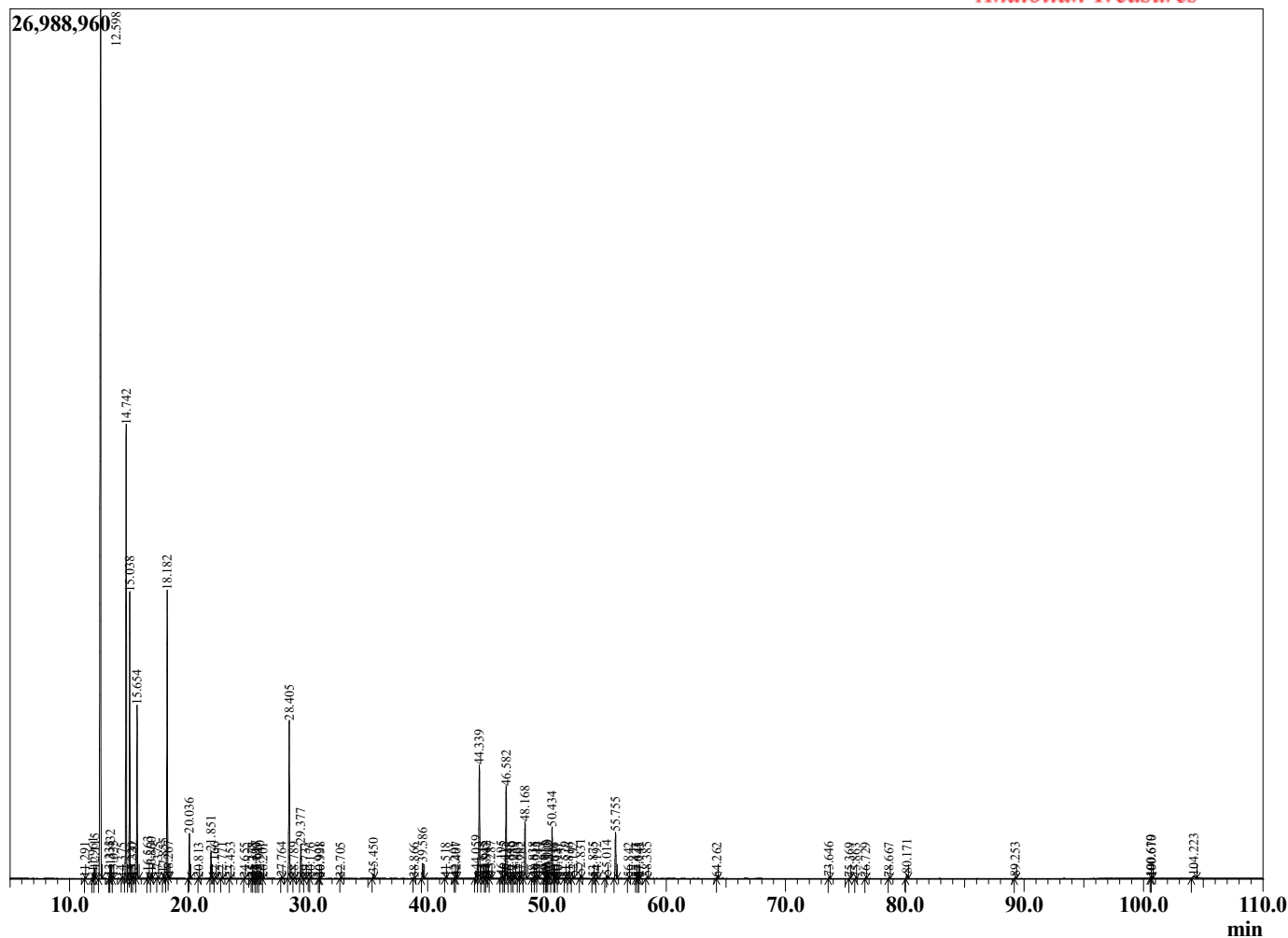
Sample Information

Sample Type : Essential Oil  
 Sample Name : Juniperus communis  
 Injection : 0.10  
 Volume :

Juniper Berry  
 Lot# RUK20-KK  
 Country: Russia



Chromatogram Juniperus communis



R.Time	Name	Area%
11.291	2,6-Dimethyl-4-octene	0.02
11.961	Tricyclene	0.15
12.115	alpha-Thujene	0.24
12.598	alpha-Pinene	35.77
13.333	alpha-Fenchene	0.04
13.432	Camphene	0.33
13.633	Thuja-2,4(10)-diene	0.05
14.375	Unidentified	0.01
14.742	Sabinene	14.43
15.038	beta-Pinene	8.10
15.220	Unidentified	0.01
15.332	Camphene	0.05
15.654	Myrcene	4.86
16.563	Pseudolimonene	0.18
16.860	delta-3-Carene	0.16
17.375	alpha-Terpinene	0.03
17.855	para-Cymene	0.14
18.182	Limonene	8.90
18.267	beta-Phellandrene	0.01
20.036	gamma-Terpinene	1.33
20.813	trans-Sabinene hydrate	0.01
21.851	Terpinolene	0.82
22.166	para-Cymenene	0.03
22.771	alpha-Pinene oxide	0.03
23.453	Unidentified	0.03
24.655	alpha-Campholenal	0.02
25.278	Terpin-3-en-1-ol	0.02
25.367	trans-Limonene oxide	0.01
25.617	trans-Pinocarveol	0.06
25.749	Epoxyterpinolene	0.02
25.940	trans-Verbenol	0.06
26.201	trans-beta-Terpineol	0.01
27.764	Borneol	0.05
28.405	Terpinen-4-ol	5.65
28.789	para-Cymen-8-ol	0.02
29.377	alpha-Terpineol	1.15
29.733	Unidentified	0.02
30.176	Verbenone	0.02
30.921	endo-Fenchyl acetate	0.01
30.998	trans-Carveol	0.03
32.705	Carvone	0.01
35.450	Bornyl acetate	0.15
38.866	delta-Elemene	0.02
39.586	alpha-Terpinyl acetate	0.55
41.518	alpha-Copaene	0.02
42.291	Unidentified	0.02
42.407	beta-Elemene	0.05
44.059	alpha-Cedrene	0.34
44.339	beta-Caryophyllene	4.40
44.613	beta-Cedrene	0.08
44.845	Unidentified	0.01
44.942	gamma-Elemene	0.10
45.287	cis-Thujopsene	0.07
46.195	Humulen-(v1)	0.10
46.415	trans-beta-Farnesene	0.03
46.582	alpha-Humulene	3.56

R.Time	Name	Area%
46.848	Alloaromadendrene	0.03
47.080	Unidentified	0.03
47.239	beta-Acoradiene	0.04
47.603	10-beta-H-Cadina-1(6),4-diene	0.03
47.782	trans-Cadina-1(6),4-diene	0.04
48.168	Germacrene D	2.21
48.838	trans-Muurolo-4(14),5-diene	0.03
49.015	beta-Alaskene	0.06
49.244	alpha-Muuroloene	0.05
49.811	beta-Bisabolene + Unidentified	0.04
49.915	Unidentified	0.02
50.003	alpha-Alaskene	0.09
50.119	gamma-Cadinene	0.10
50.434	delta-Cadinene	1.89
50.616	cis-Calamenene	0.01
50.757	beta-Sesquiphellandrene	0.02
50.941	trans-gamma-Bisabolene	0.01
51.529	alpha-Cadinene	0.03
51.816	Selina-3,7(11)-diene	0.02
52.192	Elemol	0.05
52.831	Germacrene B	0.13
53.875	Germacren D-4-ol	0.03
54.192	Caryophyllene oxide	0.03
55.014	allo-Cedrol	0.11
55.755	Cedrol	1.82
56.842	Unidentified	0.02
57.473	Unidentified	0.01
57.641	tau-Cadinol	0.01
57.745	epi-alpha-Cadinol	0.02
58.385	alpha-Cadinol	0.05
64.262	Cedryl acetate	0.02
73.646	meta-Camphorene	0.05
75.369	para-Camphorene	0.01
75.863	Manool oxide	0.01
76.729	Sclarene	0.02
78.667	Abietatriene	0.02
80.171	Abietadiene	0.17
89.253	4-epi-Abietal	0.05
100.619	Unidentified	0.04
100.670	Unidentified	0.02
104.223	Unidentified	0.21
		100.00